

Thinking About Clinical Trials

Dawn Laney, MS, CGC, CCRC

Genetic Counselor/Assistant Professor

Director of the Emory Genetic Clinical Trials Center

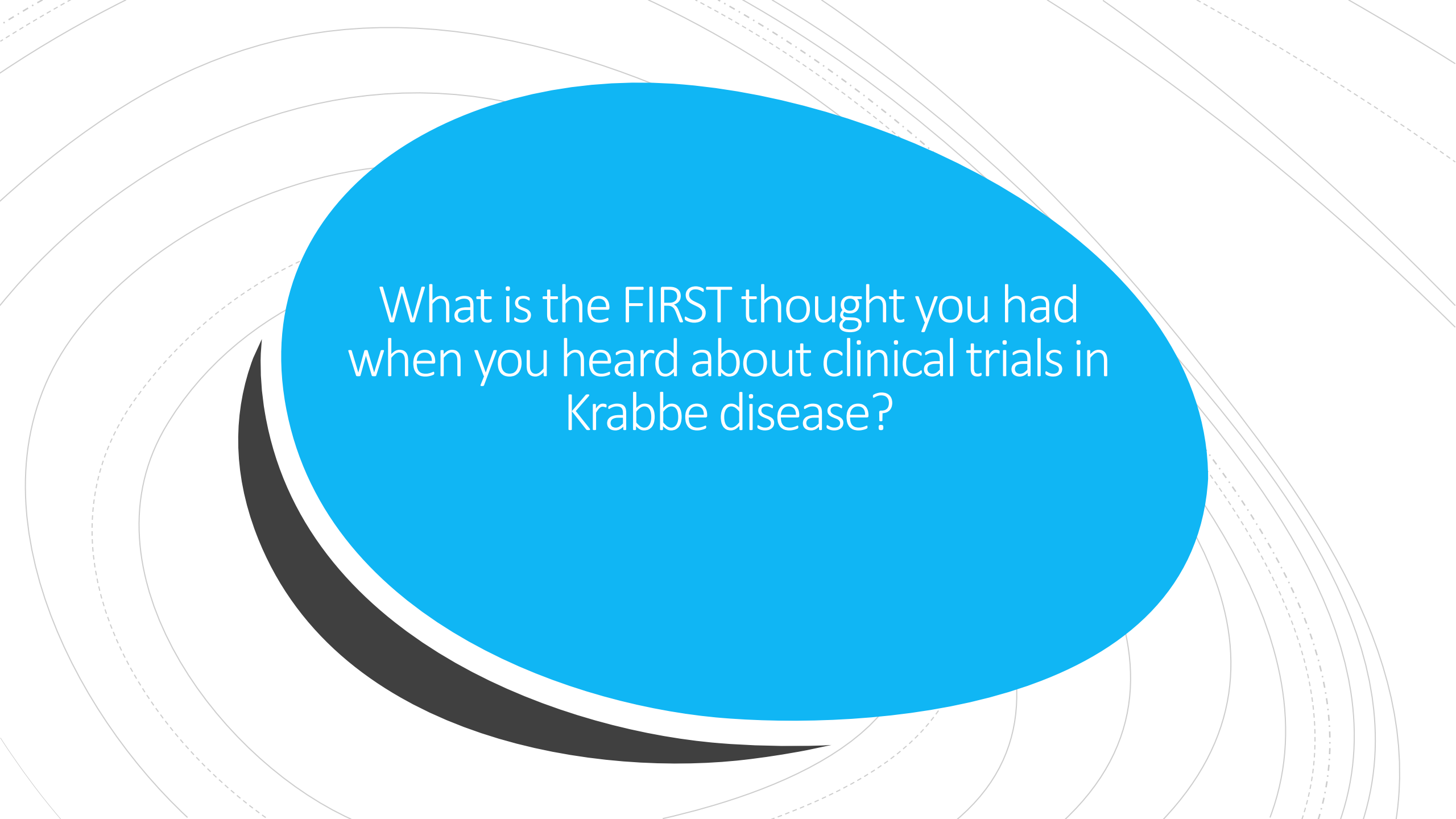
Emory Department of Human Genetics





Disclosures

- Grant funding from Sanofi-Genzyme for ISS
- Research coordinator for industry sponsored studies from 4DMT, Amicus Therapeutics; Sanofi-Genzyme, Inc.; Protalix; Sangamo, & Takeda/Shire.
- Serve on the KrabbeConnect board and the Fabry Registry NA Board of Advisors
- Honoraria/consulting: Takeda/Shire, Protalix, Amicus Therapeutics, and Sanofi-Genzyme, Inc.
- Co-Founder, ThinkGenetic, Inc.



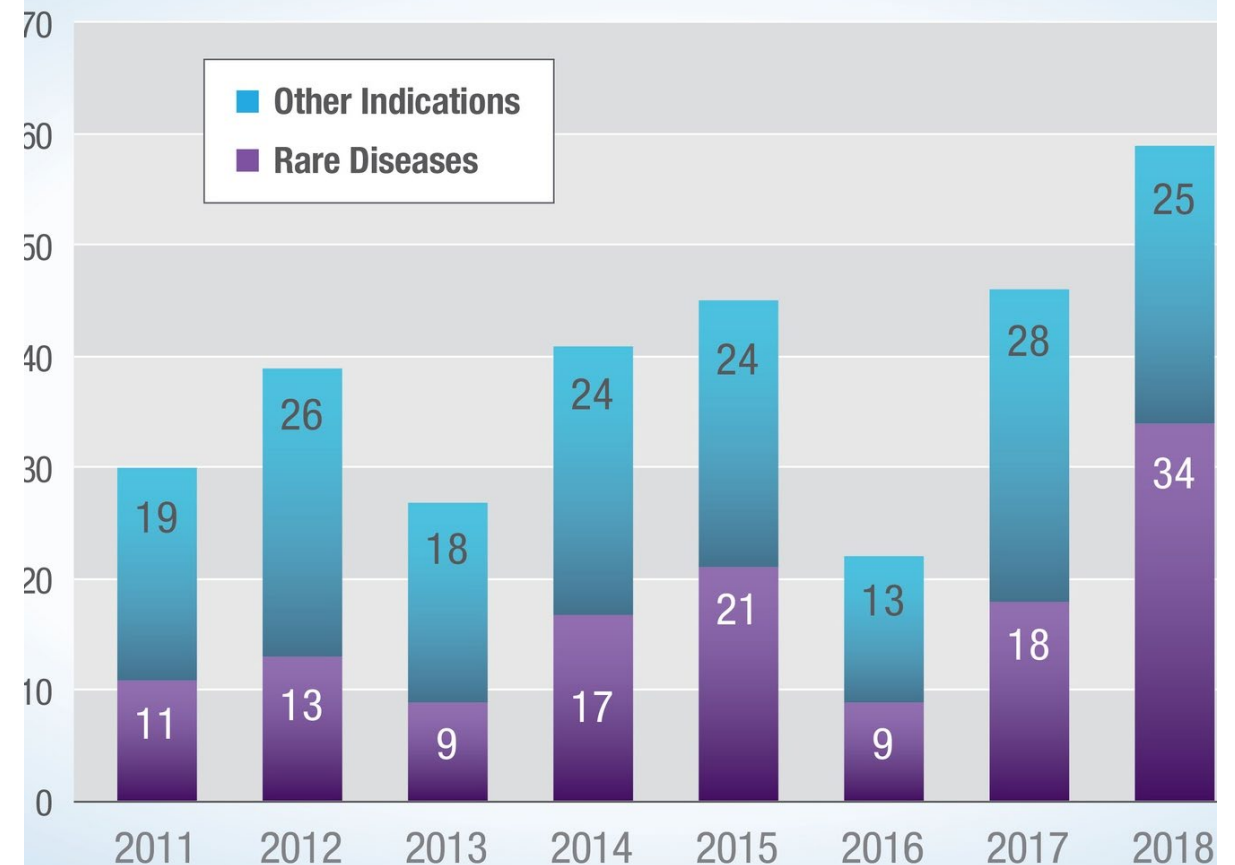
What is the FIRST thought you had
when you heard about clinical trials in
Krabbe disease?

Relief
Frustrated
Happy Guilt Sad
Curious
Invigorated
Grateful





US FDA Approvals of Novel Therapies



What Next?

- What are clinical trials?
- Where to find out about studies
- How to learn more about a specific study
- How to participate in studies
- What questions to think about when reading about a study
- What questions to ask your doctor
- What questions to ask the study team
- How do you qualify for a study
- What to do you do if you qualify for a study
- What to do if you DON'T qualify for a study

Natural History Studies

No Targeted Therapy



Database or chart review studies

Patient history

Biomarker measurements at time of diagnosis

Response to therapy

Current disease status

Questionnaires/QoL

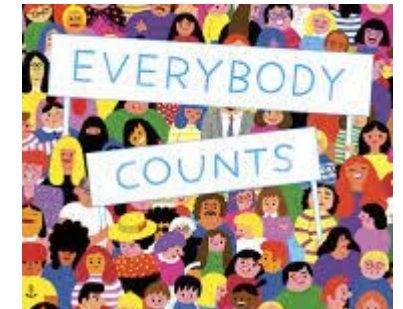
AND

Prospective data collection

Genetic and/or genomic testing

Current biomarker testing (blood, stool, saliva samples)

More powerful when they are inclusive



Diffusion Tensor Imaging (DTI) in Infants With Krabbe Disease



The safety and scientific validity of this study is the responsibility of the study sponsor and investigators. Listing a study does not mean it has been evaluated by the U.S. Federal Government. Read our [disclaimer](#) for details.

Sponsor:

Maria Escolar

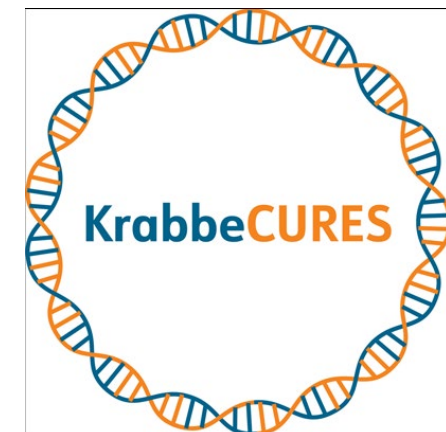
Collaborator:

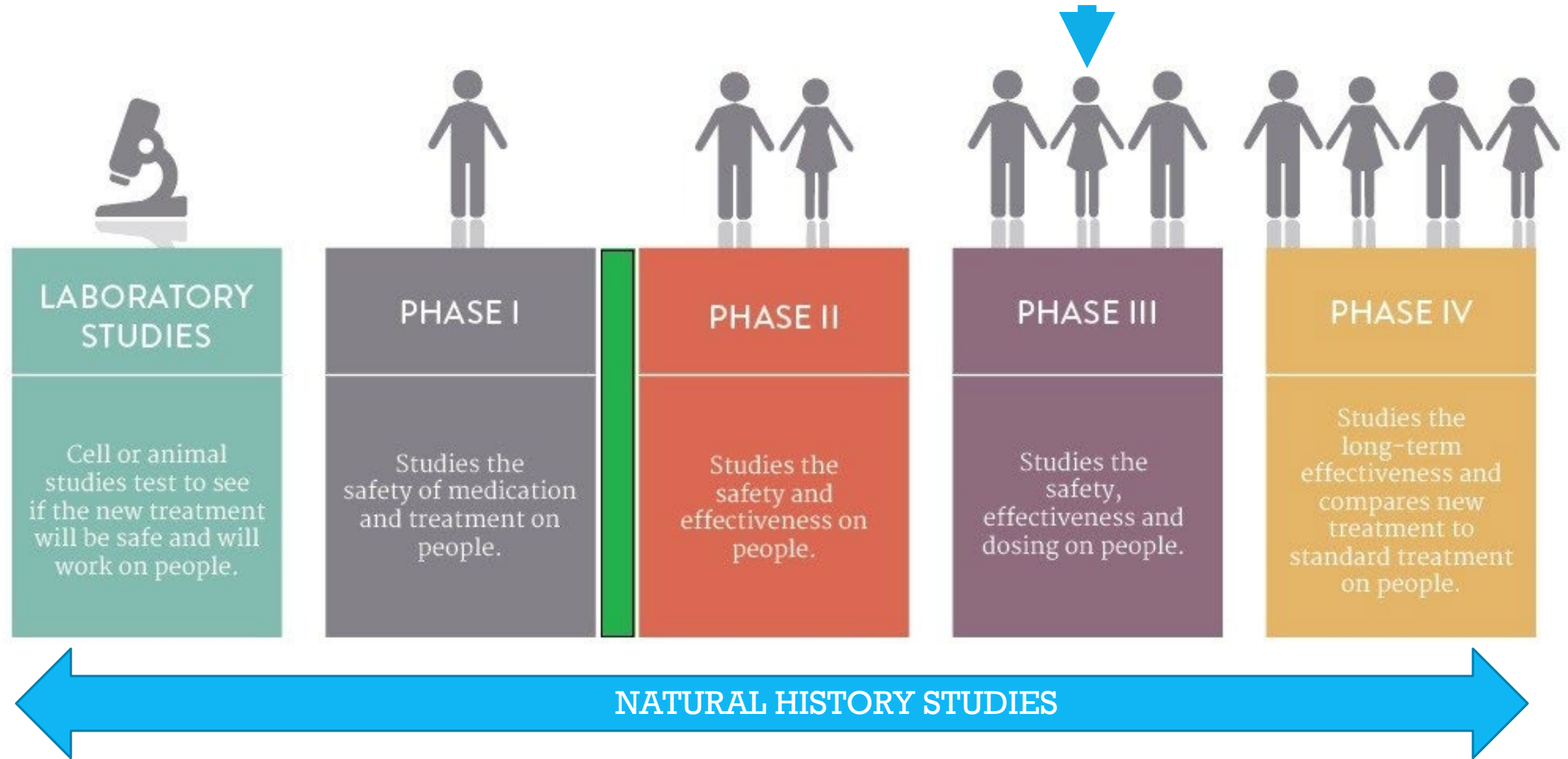
National Institute of Neurological Disorders and Stroke (NINDS)

> [Pediatr Neurol.](#) 2011 Sep;45(3):141-8. doi: 10.1016/j.pediatrneurol.2011.05.007.

Early infantile Krabbe disease: results of the World-Wide Krabbe Registry

Patricia K Duffner¹, Amy Barczykowski, Kabir Jalal, Li Yan, Denise M Kay, Randy L Carter







- Can be single arm (no placebo arm)
- Often not randomized and usually open label
- Safety Phase 1 trials are not usually required and may be Phase I/II
- Phases 2 and 3 can be combined when the patient population is very low.

The FDA facilitates patient-focused drug development (PFDD) meetings, wherein they collect patient experience data from the patients, their family members, their caregivers, and disease foundations.

These data can help the orphan drug developers for a given rare disease in determining clinical endpoints and the route of therapy administration for their clinical trials.

EXTERNALLY-LED PATIENT-FOCUSED DRUG DEVELOPMENT MEETING KRABBE DISEASE

Join us for this virtual event on Thursday, October 29, 2020!



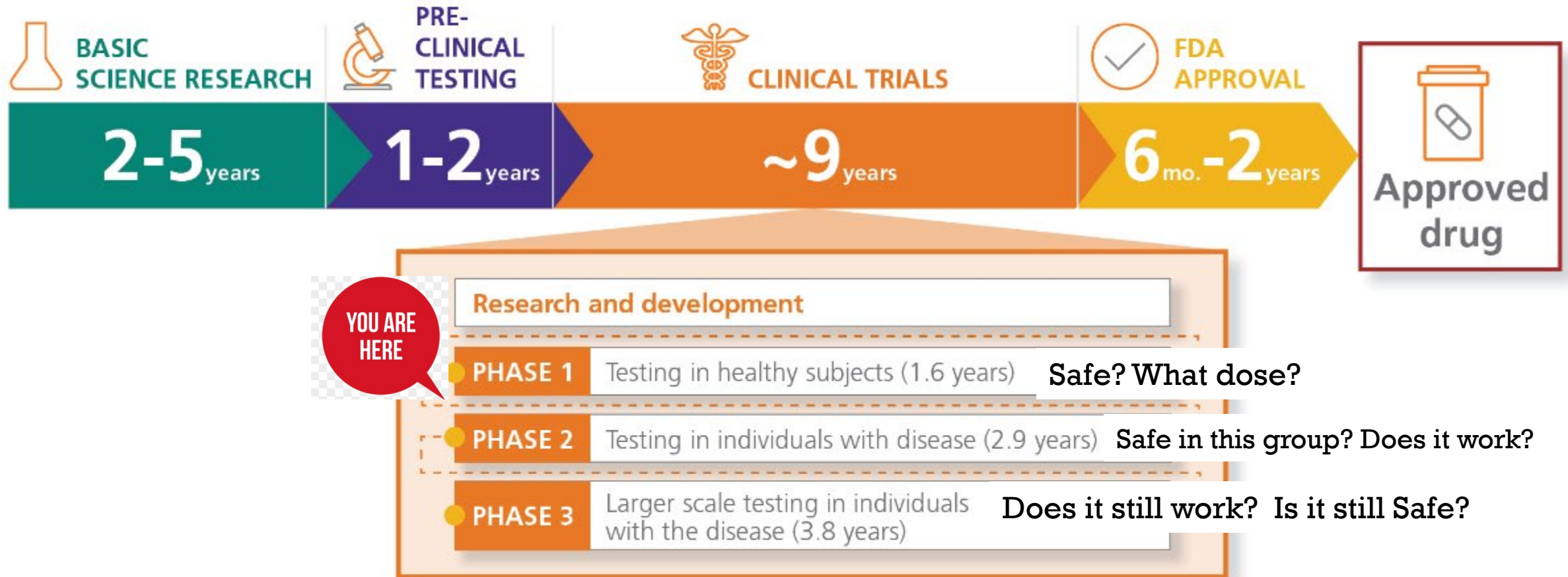
bit.ly/NORD-krabbe-pfdd

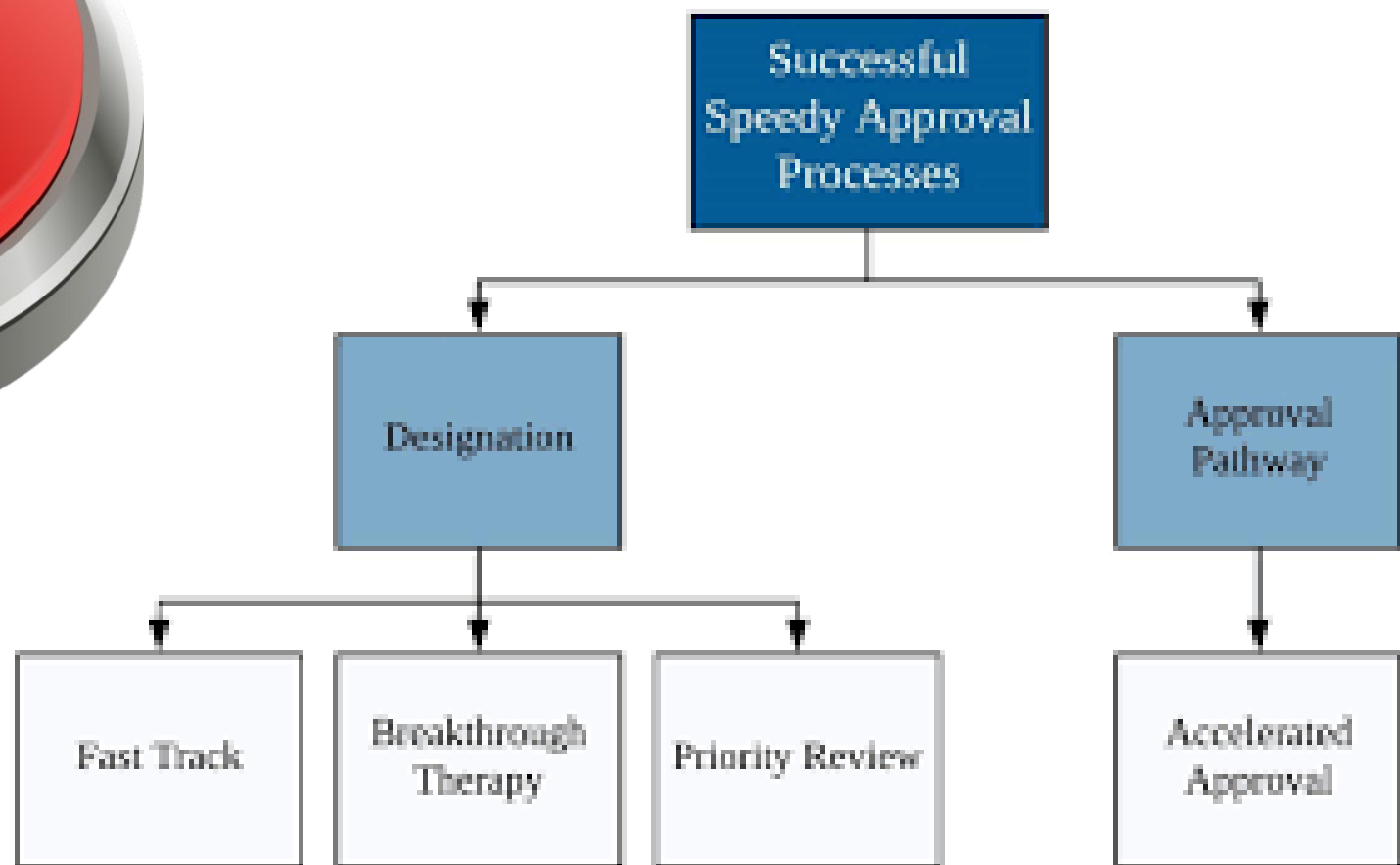
DON'T MISS THIS FDA MEETING

#CUREKRABBE TOGETHER

Let's all work as a team to help those living with Krabbe disease live their best life!

FDA DRUG-APPROVAL PROCESS





Where to find out about studies

- Krabbe Support and Advocacy groups
- Your doctor/genetic counselor
- Krabbe Centers of Excellence
- Clinicaltrials.gov
- Pharmaceutical companies
- Your friends in the community
- Joining KrabbeCURES and agreeing to be contacted
- Meetings (KTRN/WORLD/etc)



KrabbeConnect

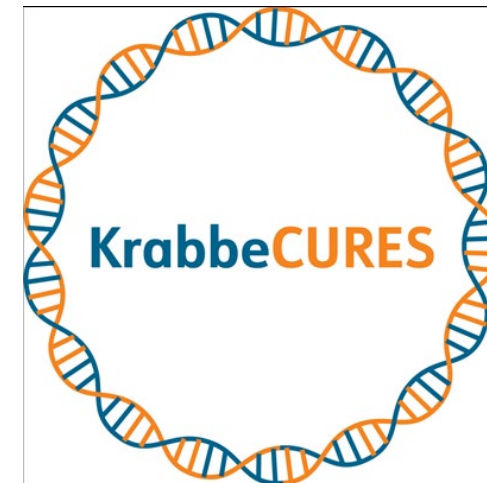
CONNECTING PATIENTS & RESEARCH



Sponsored by:  The Legacy of Angels
FOUNDATION

 HUNTER'S HOPE

ClinicalTrials.gov



How to learn more about a specific study

← → ↻ clinicaltrials.gov/ct2/show/NCT04771416?cond=Krabbe+disease&draw=2&rank=5

Contacts

Contact: Patient/Family Inquiries 267-866-0133 patientservices@passagebio.com

Contact: Physician Inquiries medinfo@passagebio.com

Locations

United States, Illinois

Ann & Robert Lurie
Chicago, Illinois, United States, 60611

United States, New York

New York-Presbyterian
New York, New York, United States, 10065

United States, Pennsylvania

The Children's Hospital of Philadelphia
Philadelphia, Pennsylvania, United States, 19104

United States, Utah

University of Utah School of Medicine
Salt Lake City, Utah, United States, 84132

Contact the study coordinator/investigator

Support and Advocacy groups

Your healthcare team

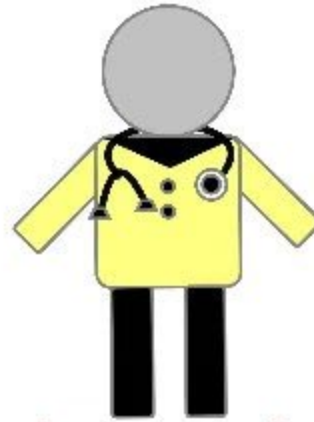
Talk to the specific clinical trials team of the
pharmaceutical company

****Keep in mind that you do NOT have to live in a specific place to be in a research study. Most clinical trials have funding for travel to and from the location****



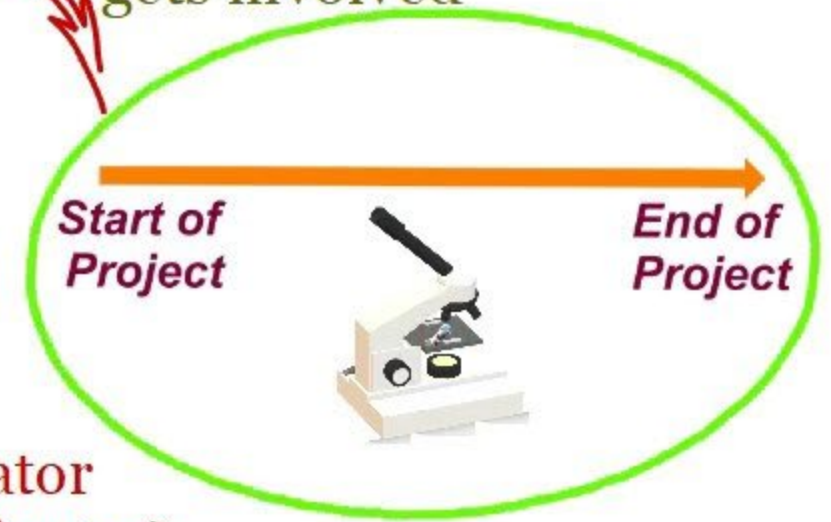
Principal Investigator

works under



Clinical Research Coordinator
(also known as Study Coordinator)

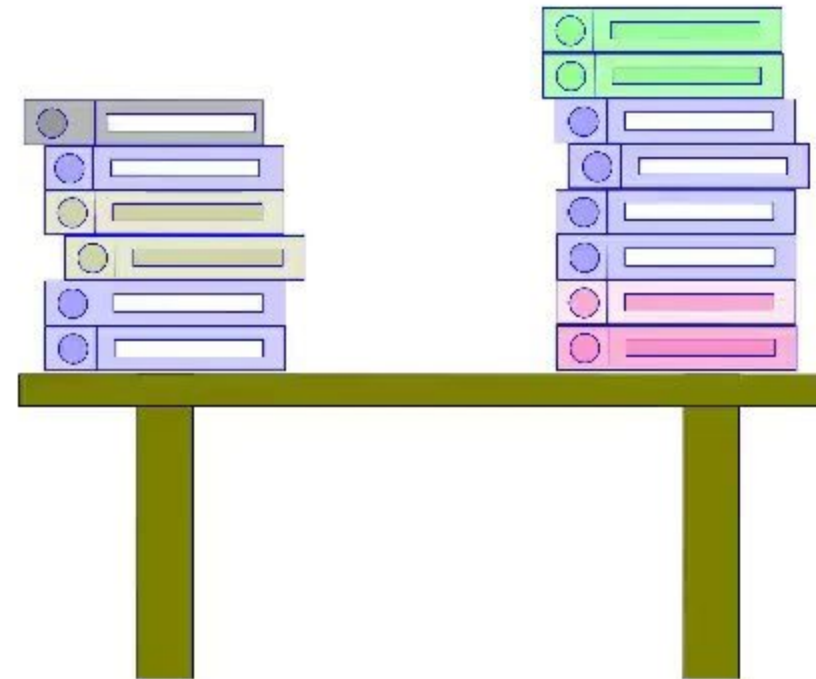
gets involved

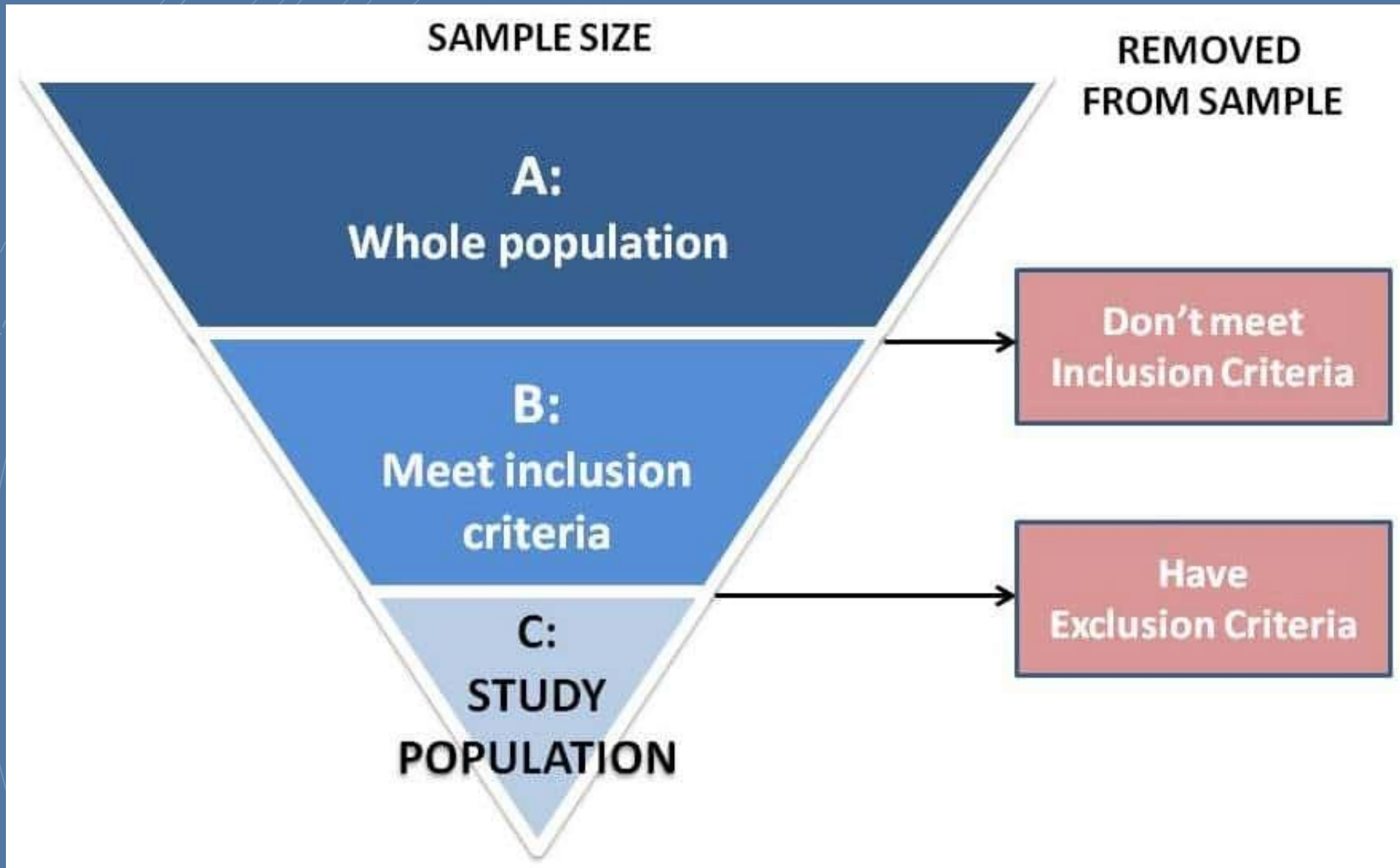


supports
management



coordinates in daily
trial activities





Study Population

Children with a low levels of galactocerebrosidase, a family history of Krabbe disease or has been diagnosed with Krabbe disease, or is a child at risk of developing motor disability. Newborn screening State of New York and newborns with low enzyme.

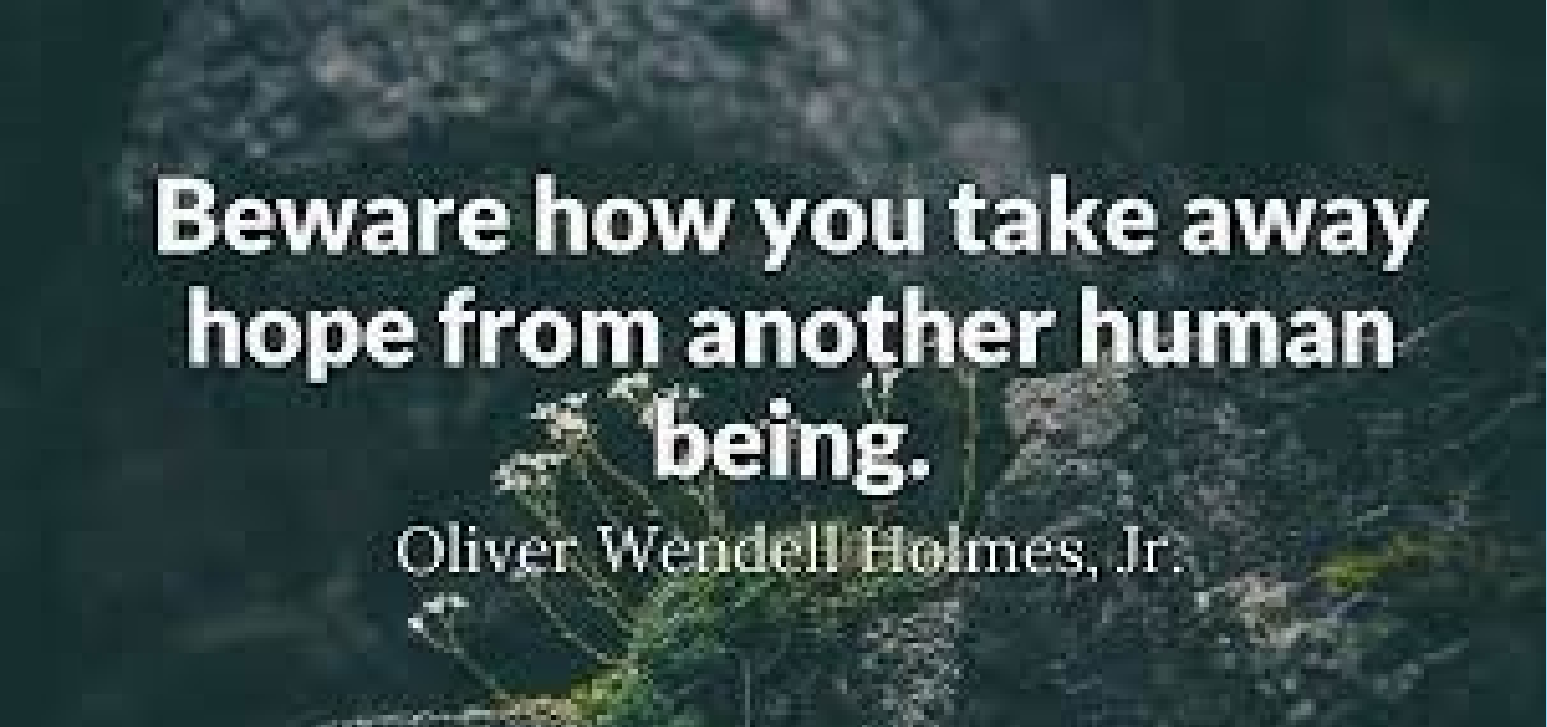
Criteria

Inclusion Criteria:

- 1.Positive newborn screening test (low galactocerebrosidase)
- 2.Infantile Krabbe Disease diagnosed by confirmatory low levels of residual enzyme by Dr. Wenger's Lysosomal Storage Diseases laboratory at Jefferson's Medical College (contracted by New York State) and/or carrier status established because of family history of Krabbe Disease. Patients have to be less than 6 weeks old at the time of the first assessment
- 3.Children at risk of developing motor disability

Exclusion Criteria:

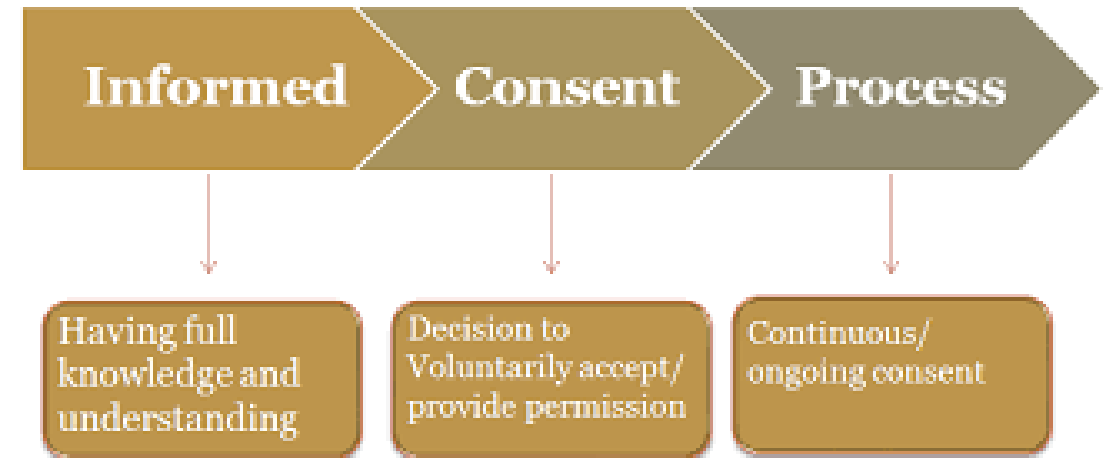
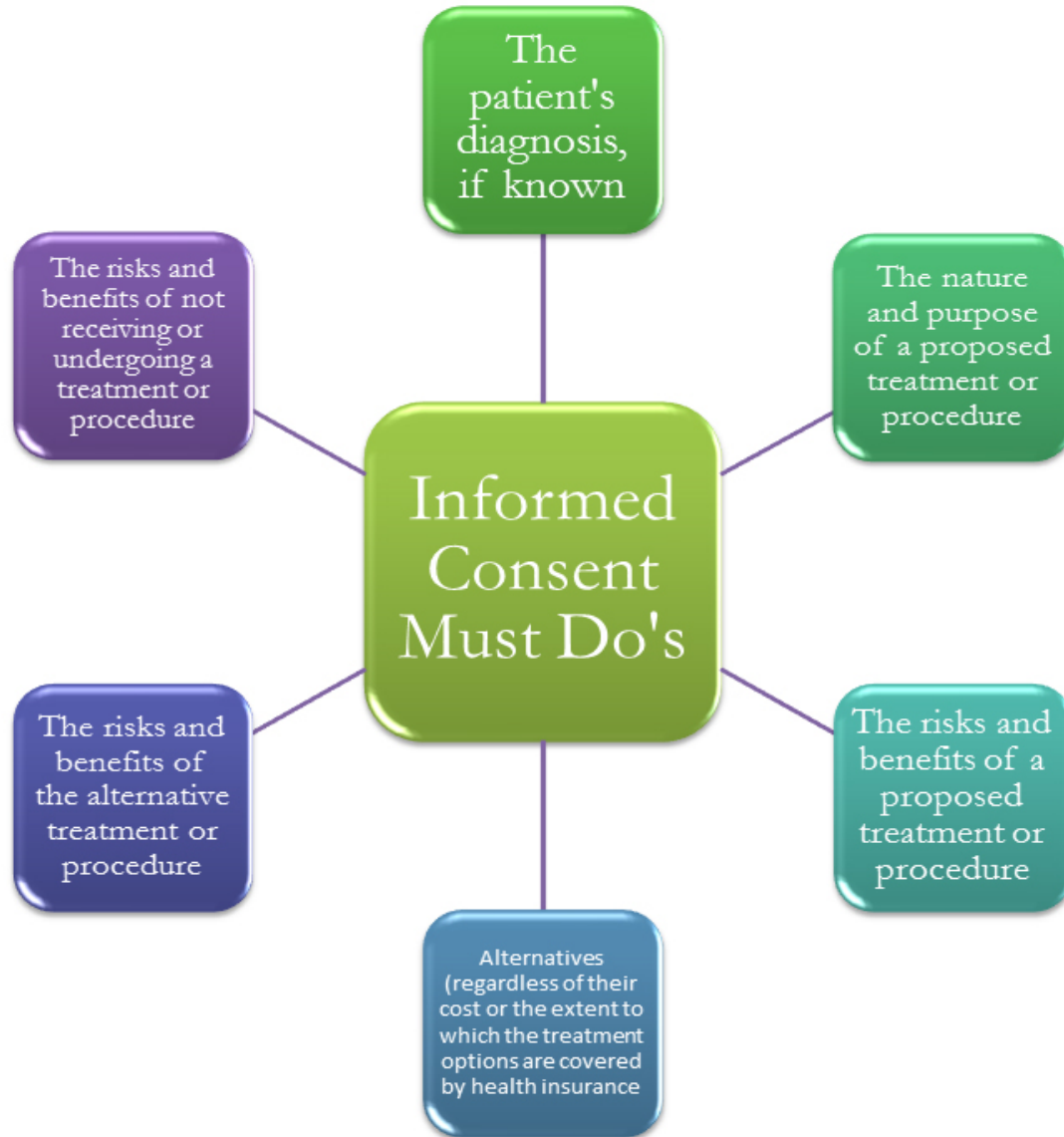
- 1.Diagnosis or physical signs of known genetic conditions or syndromes, serious medical or neurological conditions affecting growth and development (e.g., seizure disorder, diabetes, congenital heart disease) or sensory impairments such as vision or hearing loss
- 2.Children who may have suffered serious perinatal brain damage, children with birth weights less than 2000 grams and/or gestational ages of less than 34 weeks, or those with a history of intraventricular hemorrhage
- 3.Children who may have a contraindication for MRI (pacemaker, vascular stents, metallic ear tubes, other metal implants or braces).

A dark, textured background, possibly a rock face or a cave wall, with a small plant growing from a crack in the rock. The plant has thin, green stems and small white flowers. The overall tone is somber and contemplative.

**Beware how you take away
hope from another human
being.**

Oliver Wendell Holmes, Jr.

Specially Designed to Provide Information



The background of the slide features a series of thin, curved lines in light gray and white, creating a sense of motion and depth. On the left side, there is a blue speech bubble graphic containing the text 'Study Questions'.

Study Questions

- What is this study trying to find out?
- What type of treatment is it investigating?
- What treatment or tests are required vs. optional?
- Are any tests or lab results returned? When?
- Is there a placebo arm? If so, what are the chances I will get the experimental treatment or the placebo?
- How will I know if the treatment is working?
- Will there be a benefit for me/my child?
- What are the possible risks, side effects, and benefits of the study treatment/procedures as compared with my current treatment?

Logistics

- How long will the clinical trial last?
- Where will the study take place?
- Are there hospital stays and multiday visits?
- Are travel and meals paid for in the study?
- Are all study procedures paid for by the sponsor?
- Do we receive a stipend?
- Who pays for any injuries?
- Is there a closer site to me?
- Can some assessments be done locally or virtually?
- How will the study affect my everyday life?

The Protocol and Study assessment schedule

Very specifically lays out a timeline of what need to happen when and how much +/- time you have to do it

	Screening	V. 1 Baselin e	V. 2 6 mths (+/- 2 w)	V.3 12 mths (+/- 2 w)	V.4 24 mths (+/- 2 w)
Written Informed Consent	X				
Inclusion/Exclusion Criteria	X				
Pedigree update/construction including age of onset of Fabry symptoms in affected family members as available*		X	X	X	X
Physical Exam		X		X	X
Fabry specific systems review and family self-report assessment form*		X	X	X	X
Face, Legs, Activity, Cry, Consolability (FLACC) behavioral pain scores by parent report at incidence of pain in pain/symptom log*		X	X	X	X
Rome III questionnaire for gastrointestinal issues*		X	X	X	X
Spot Urine GL3 and Lyso GL3 analysis*		X	X	X	X
Exploratory urine biomarkers*		X	X	X	X
Spot Urine albumin/protein/creatinine*		X	X	X	X
Cord Blood analysis of Plasma GL3 (if available)		X			
Optional blood sample for functional enzyme studies and possible analysis for genetic changes in the GLA gene that may alter symptom onset (cord blood or systemic)*		X			
Limited surface eye exam and images**		X		X	X
Echo/EKG**		X			
Renal imaging/biopsies**	X	X			
Brain Imaging**	X				
Record obtain/review medical records	X	X	X	X	X

YOU WERE SO PREOCCUPIED WITH WHETHER OR NOT YOU COULD

YOU DIDN'T STOP TO THINK IF YOU SHOULD



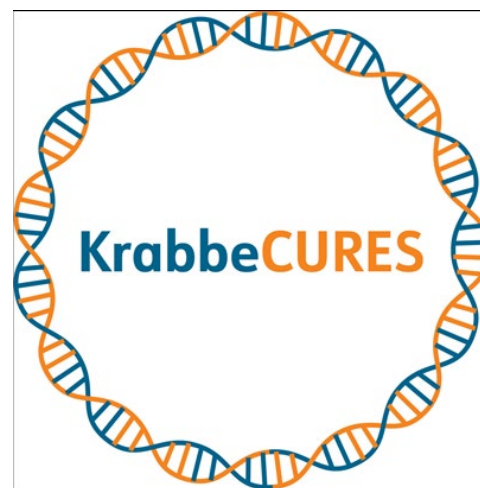
SOMETIMES
REJECTION IS
REALLY JUST
redirection

www.meghanmakesdo.com



KrabbeConnect

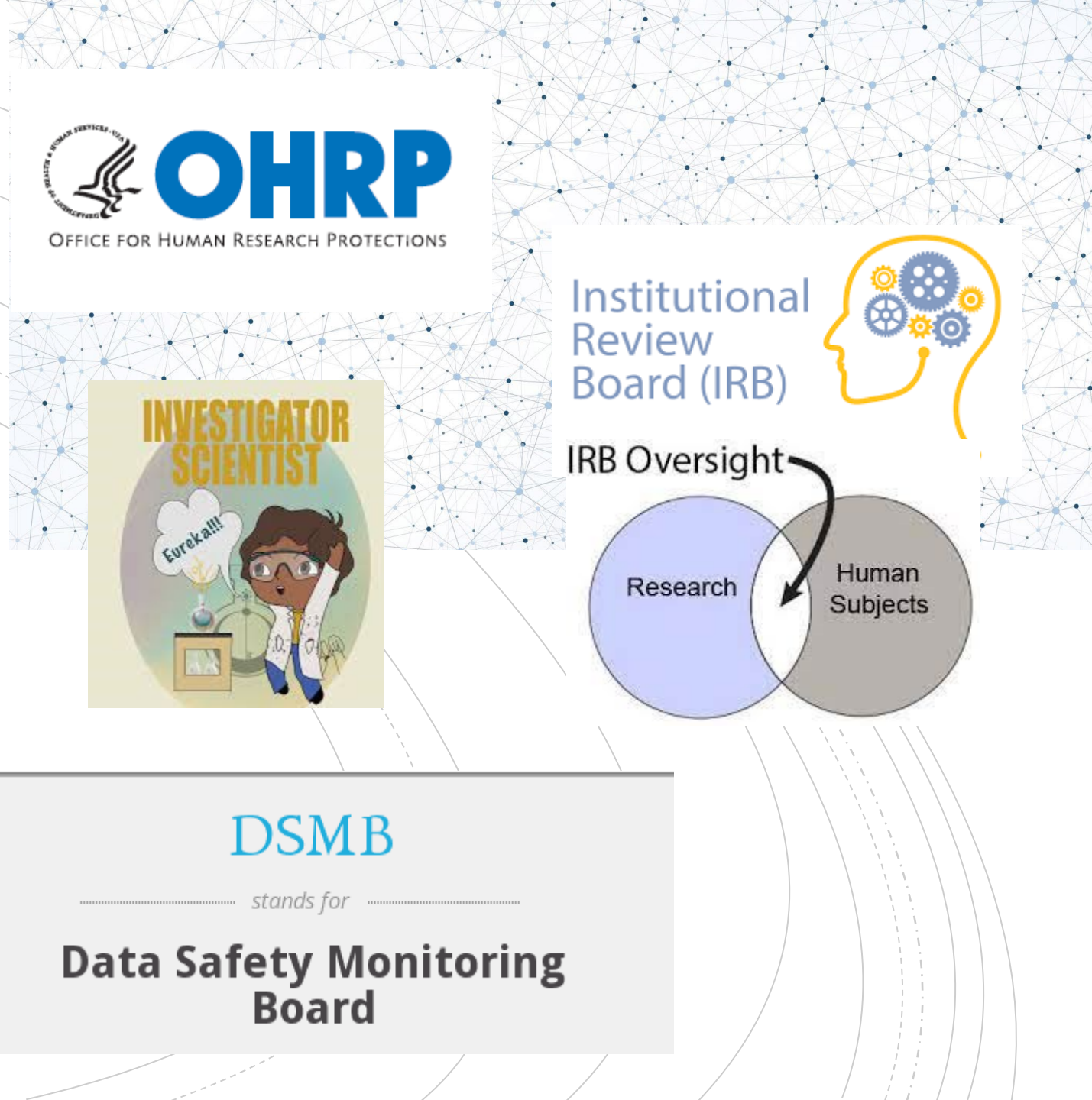
CONNECTING PATIENTS & RESEARCH



**TAKE
CARE
AND
KEEP
IN TOUCH**

Speak up!

Human Subject Protections



What Pharm companies are working on therapies for Krabbe?



small molecule therapeutics
Preclinical



Gene Therapy into cisterna magna: Phase I/II
<https://www.clinicaltrials.gov/ct2/show/NCT04771416?cond=Krabbe&draw=2&rank=5>



Gene therapy

Study-Gene therapy after hematopoietic stem cell transplantation (HSCT): Phase I/II
<https://www.clinicaltrials.gov/ct2/show/NCT04693598?cond=Krabbe&draw=2&rank=3>

Resources

- **Should My Child Participate?**

<https://www.ciscrp.org/should-my-child-participate/>

- **Clinical Research Trials and YOU**

<https://www.nih.gov/health-information/nih-clinical-research-trials-you>

- **Clinical Trials: Benefits, Risks, and Safety**

<https://www.nia.nih.gov/health/clinical-trials-benefits-risks-and-safety>

- **KrabbeConnect Research Page**

<https://krabbeconnect.org/research-studies-trials/>

Dawn.laney@emory.edu

A Day in The Life of A Study Coordinator

